



# STRAPPING TRAILER I

Complete strapping trailer unit.

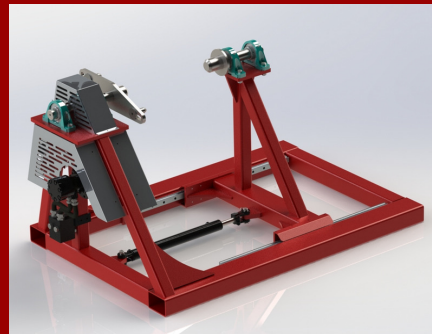
Features a 16' bumper pull wooden deck over trailer with 7K axles and brakes, spooler without levelwind, powerpack and sheave wheel.

## DIMENSIONS

245" x 96" x 96" (LxWxH)

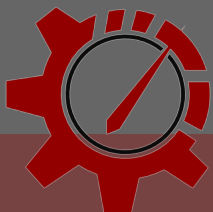
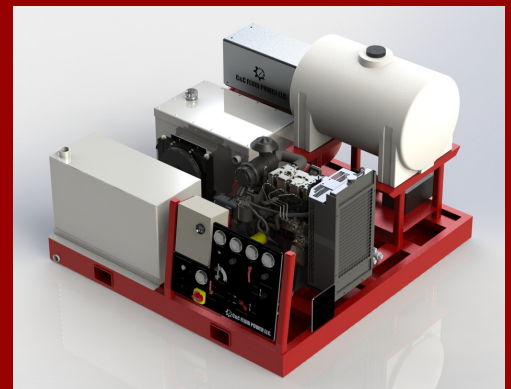
7,000 LBS (Dry Weight)

Manufactured by:  
C&C Fluid Power



- Up to 60" flange spool
  - Separate brake and motor for easy service and repairs
  - Guards for chain drive
  - Hydraulic brake and spool load assist
  - 12" to 36" wide spools\*
- \*cylinder change required

- 30hp Diesel Engine
- 55g Hydraulic Tank
- Triplex pump
- 65 gallon poly tank
- Hydraulic Air Compressorw/20g air tank
- Toolbox



## C&C FLUID POWER LLC.

3176 FRITZ SWANSON RD. KILGORE, TX 75662

9 0 3 . 4 8 3 . 4 5 0 0